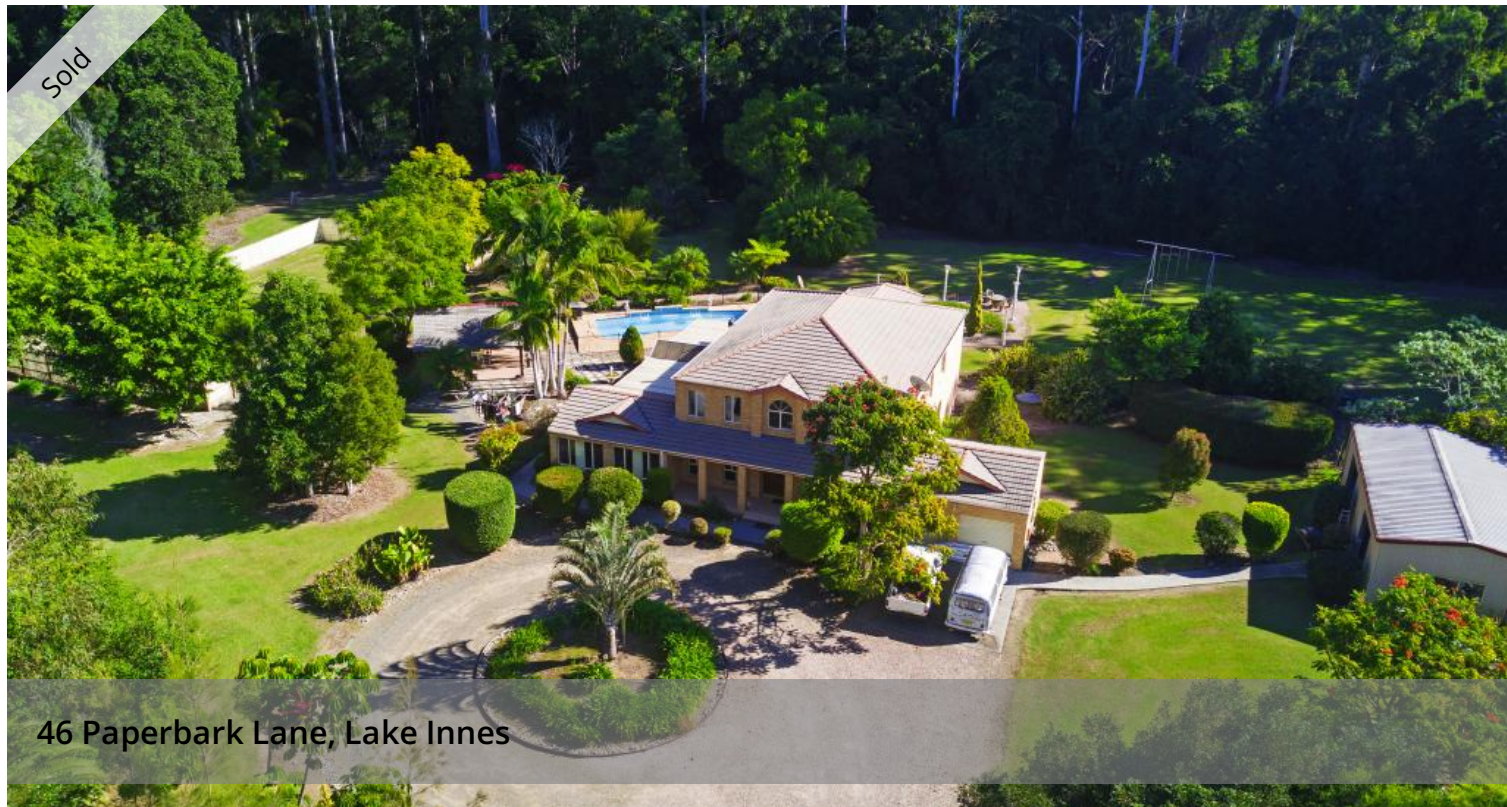


Sold



46 Paperbark Lane, Lake Innes



Substantial home on 4.4 acres in premium location

This premium property boasts an exclusive and rare combination of convenient and private location, substantial home and lovely small acreage (4.4 acres/1.8 ha).

Located less than 10 minutes to Port Macquarie in the Lake Innes area, the property is in an exclusive cul de sac among a number of other acreage properties.

The two story brick home enjoys around 500m² of living space with abundant living, dining and entertaining options that flow inside and out to the manicured grounds, inground pool and large gazebo.

The floorplan is configured to offer separate formal living and dining areas, a games room and bar, family living, kitchen and casual dining zone as well as a vast conservatory for dining and entertaining. Upstairs are four bedrooms, an activity/study area and main bathroom. The expansive parents' suite has a walk-in wardrobe and ensuite with spa bath, shower and double vanities.

Mature gardens surround the home which has bush at the rear and plentiful areas of open lawn.

Completing this impressive package is a grassed tennis court, double garage and three bay shed with three-phase power.

Buyers seeking a rarely available quality acreage property on the edge of Port Macquarie should contact the exclusive agent Julie Slater on 6585 2212 or 0499 994 241 for more information or to arrange a private

4 bedrooms 2 bathrooms 5 car spaces 1.80 ha

Price	SOLD for \$1,060,000
Property Type	Residential
Property ID	139
Land Area	1.80 ha

Agent Details

Julie Slater - 0499 994 241

Office Details

Wauchope
36 Cameron Street PO Box 17
Wauchope NSW 2446 Australia
02 6585 2212

SLATER & SLATER
REAL ESTATE

viewing.

The above information provided has been furnished to us by the vendor/s. We have not verified whether or not that information is accurate and do not have any belief in one way or the other in its accuracy. We do not accept any responsibility to any person for its accuracy and do no more than pass it on. All interested parties should make and rely upon their own inquiries in order to determine whether or not this information is in fact accurate.